

In This Issue:

- > Rebuilding Lafayette | I-49/I-10 Overpass Installation
- > The Shipyard | Launching EPF 14
- > Team Member Spotlight | Quincy Broussard

BERARD
SINCE
1945

The Mega Transport Experts

Rebuilding Lafayette I-49 / I-10 Overpass Installation



Job Specs

Weight:
330,000 lbs.

Dimensions:
82'-4"L x 16'-4"W x 7'-5"H

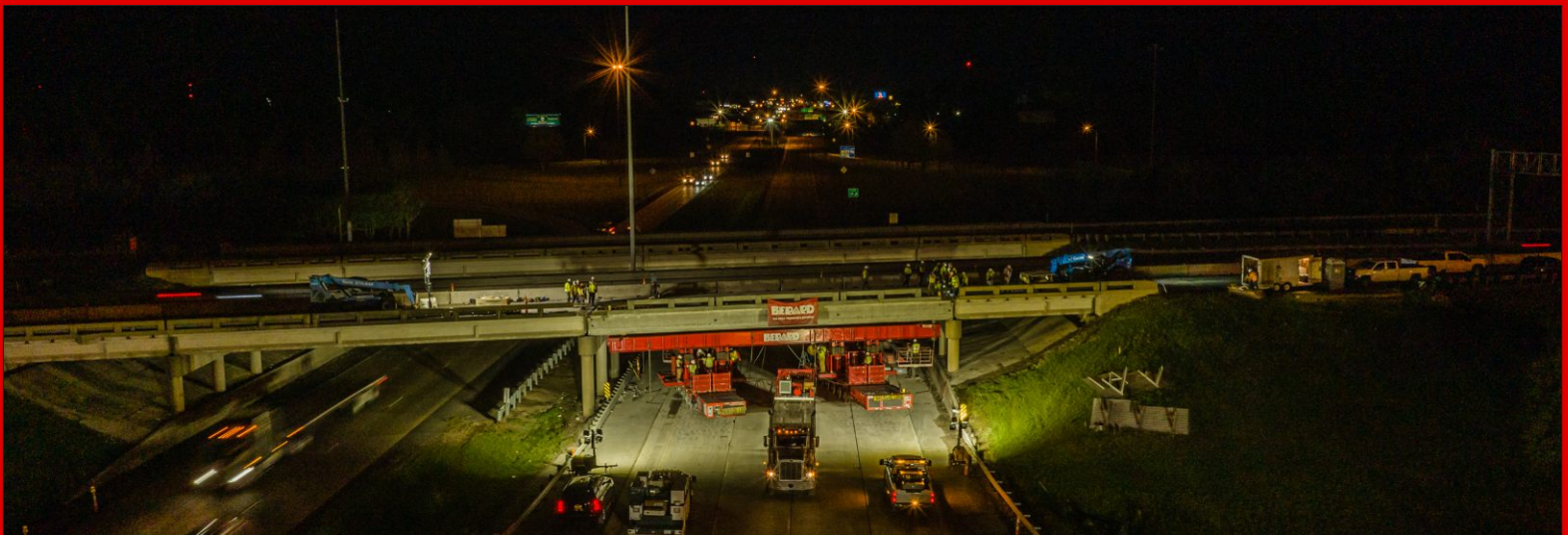
Equipment Used:

12 axle lines of SPMTs,
climbing jacks, unified jacking
system, cribbing, stands and
beams

Just over 2 months after an overweight load impacted an Interstate 10 overpass in Lafayette, LA, Berard installed the new 3-girder section in the darkness of a Friday evening 12-hour shift. Using 12 axle lines of Goldhofer PST-SLE transporters and 8 climbing jacks controlled by a JSJS unified jacking unit, the 165-ton bridge section traveled approximately 300 yards on Interstate 49, turned to the installation position, jacked to installation height, and precisely set in its final location.

By daylight Saturday morning the transporters were removed and the construction crew commenced tying the span to the bridge deck. The success of this project is a testament to the efficient yet meticulous planning by the Berard team, coupled with the experience and dedication of the field crews; a true success story to opening a major thoroughfare as quickly as possible.





The Shipyard Launching EPF 14



Job Specs

Weight: 2,200 Tons

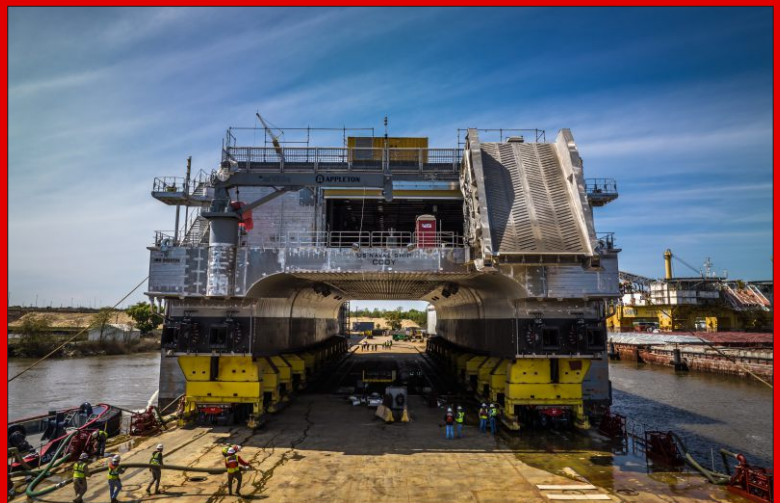
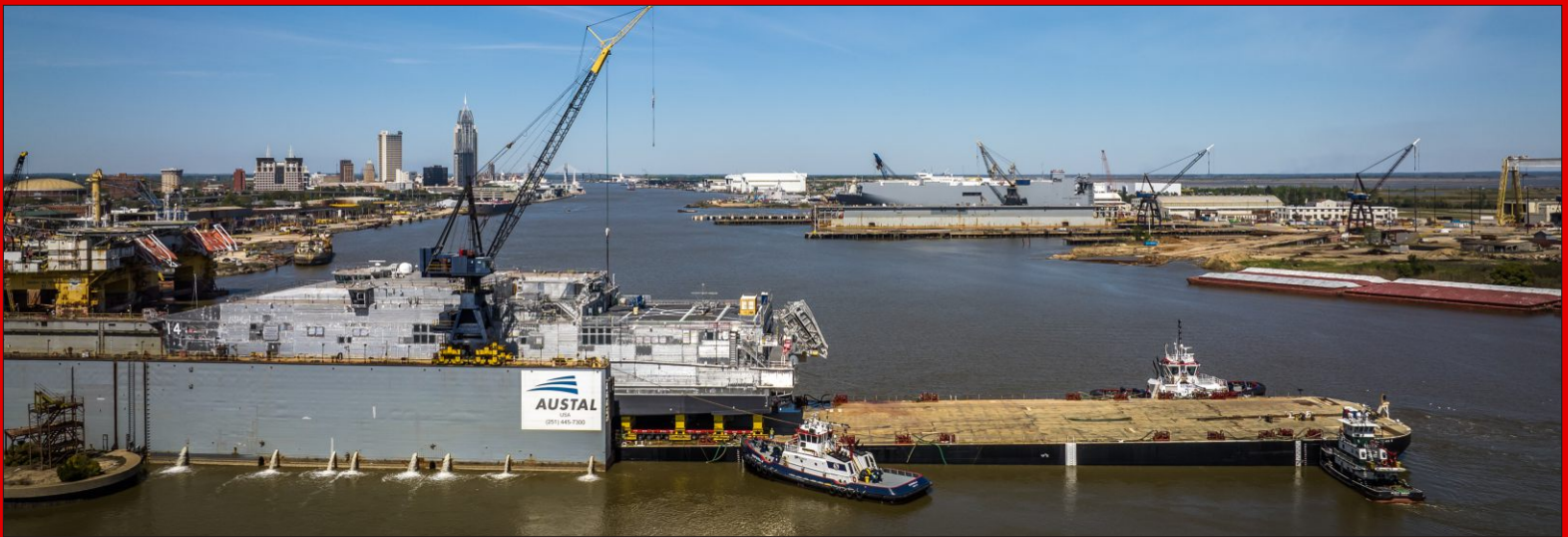
Dimensions:

338'L x 94'W x 105'H

Equipment Used: 112 axle lines of SPMTs, 4 power packs, loading ramps, high volume water pumps and winches for barge securement

The Berard team had the honor of launching another great US Navy ship. The team loaded out EPF 14, the USNS Cody, a 2,200-ton Expeditionary Fast Transport ship (EPF). The team transported the 338' long EPF from the client's final assembly bay to a deck barge. Once secured on the barge, it traveled downriver to be trans-loaded. Once at the transfer point, the trans-loading of the vessel onto the Alabama, an 800' floating dry dock, began. As usual, the trans-load went smoothly, thanks to all involved. With the team's hard work and dedication, the job was completed safely and successfully in only one day.





Quincy Broussard

Driver | Rigger



Quincy Broussard joined the team in 2021 as a driver. He's since added rigger to his list of skills and is a great team member. When asked about what he enjoys most about the job, he commented "I like the vast variety of things that we transport on a daily basis. It's always something interesting. I've always been fond of working for family companies, so I like working at Berard a lot."

Quincy is married to his wife Kimberly, and they have a son Carter and a daughter Bailyn. In his off time, he enjoys hanging out with the family, hunting, fishing, and being outdoors.



Happy Birthday!

Happy Birthday to These Dedicated Team Members!

**David Hargraves
Jesse Pelous
Jordan Tyler**